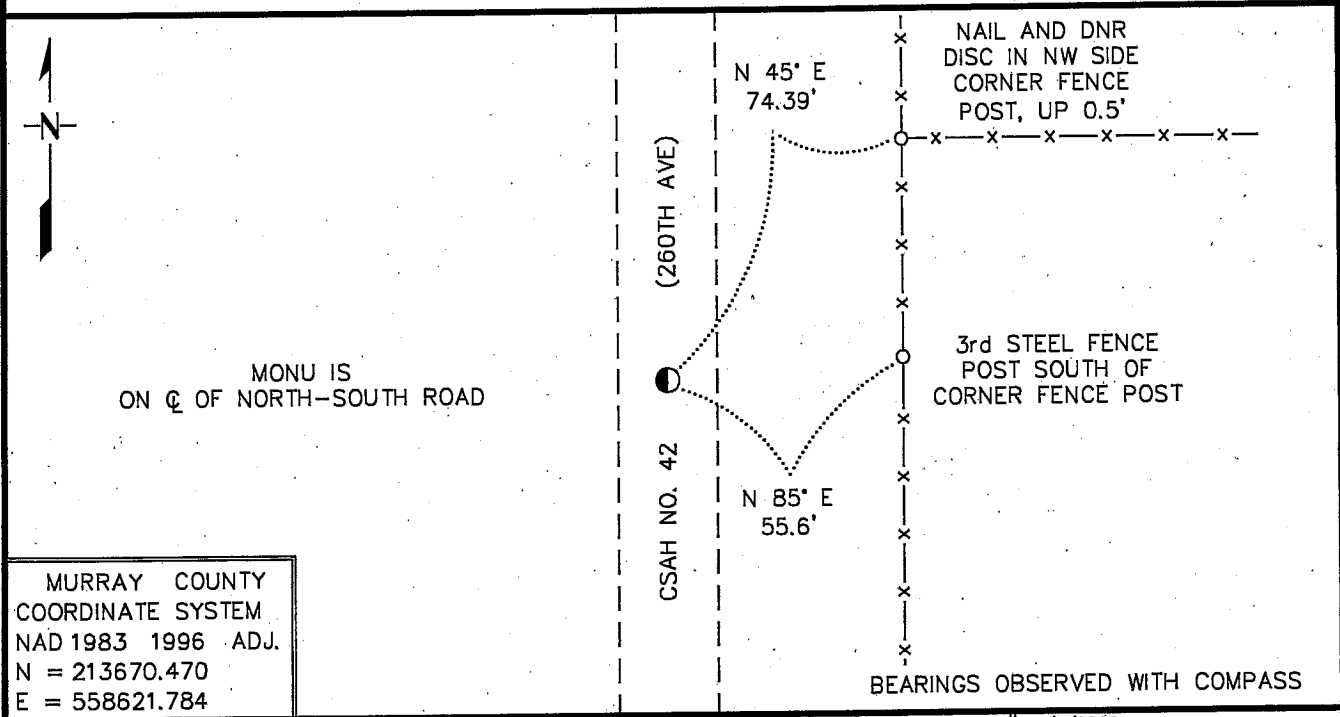


# CERTIFICATE OF LOCATION OF GOVERNMENT CORNER

EAST QUARTER Corner of Section 17, Township 108 N, Range 39 W  
5th Principal Meridian, State of Minnesota, County of MURRAY

At the corner location shown on the sketch:

- On 8/11/2009 found a 3/8" DIAMETER REBAR, DOWN 0.3'  
DATE
- left monument as found,     lowered monument,     removed monument (explain)
- On 8/11/2009 Placed a PLASTIC CAP STAMPED "MN DNR LS 17003"  
DATE  
ON TOP OF FOUND REBAR



Statement of evidence for this corner location is on back of this page. 9/1/2009  
TRA00706.00.00.01

I certify that this document was researched and prepared by me or under my direct supervision.

SIGNATURE Bruce W. Sheppard    DATE 9/14/09    License Number 17003

Title:     Land Surveyor     Professional Engineer     County Surveyor     County Engineer

The DNR Division of Lands and Minerals contacted the following for survey information:

Minnesota History Center in St. Paul  
Murray County Recorder's Office  
Murray County Highway Engineer's Office  
Zieske Land Surveying, Inc. of Windom  
Bueltel-Moseng Land Surveying of Marshall

- 1861 U.S. General Land Office notes, obtained from the Minnesota History Center, show the corner marked with a wood post with pits and mound.
- 1901 Surveyor's Record Book A, Pages 240, 255 and 256, obtained from the County Recorder's Office, contains a survey by D.L. Bighorn, Redwood County Surveyor, which record was made on June 12, 1915, by J.R. Johnston, Murray County Surveyor, from original plat on file in the office of the Town Clerk of Holly Township. Survey shows corner but a description of what kind of monument was found or set is not given. The corner is shown:
- 2651.0 feet from the northeast corner of Section 17
  - 2651.0 feet from the southeast corner of Section 17

The above information is also contained in a Surveyor's Record Book, obtained from the County Highway Engineer's Office.

- No Date Murray County Highway Department section corner information website, states that a concrete stone was located at the corner, with the following ties:
- tack in corner fence post, southwest, 49.8 feet
  - tack in third fence post, northwest, 41.9 feet
  - 30 feet north of fence line

The following is also noted:  
"call for more details"

- No Date A page in a Surveyor's Record Book, obtained from the County Highway Engineer's Office, shows a concrete stone at the corner, but does not indicate if it was found or set. The following ties are shown to the corner:
- R.P. tack in corner fence post, southwest, 49.8 feet
  - R.P. tack in third fence post north of corner post, northwest, 41.9 feet
  - corner 30 feet north of fence line

- 1977 September, a Surveyor's Record Book, obtained from the County Highway Engineer's Office, states the following about the corner:  
"dug hole 8 feet long 5 feet wide and 6 feet deep with backhoe found nothing"

- 1999 Construction Plan Sheet Number 20 (Metric Plan) for County State Aid Highway Number 42, obtained from the County Highway Engineer's Office, shows a symbol for corner but does not indicate what kind of monument was found or set. The corner is shown:
- at PI Station 12+082.252
  - in a cut section of 0.79 meters (2.59 feet)

2000 March 21, Murray County Highway Department section corner information website, states that a 3/8" rebar was set at an assumed location for the corner, with the following ties:

rebar, west, 193.81 feet

rebar, west, 270.27 feet

The following is also noted:

"call for more details, dug 8 foot x 5 foot by 6 foot deep hole with backhoe and found nothing 1977"

2009 July 28, the DNR Division of Lands and Minerals consulted with Keith Rossow, Assistant Murray County Engineer, about this corner and he remembers that the center of the 1977 excavation was on the center line of the north-south road at a distance of 2633 feet south of the northeast corner of Section 17.

2009 August 11, the DNR Division of Lands and Minerals found a 3/8 inch diameter rebar, 0.3 of a foot below the surface, at corner. The rebar was found to be:

on the centerline of north-south CSAH Number 42

2637.90 feet from the northeast corner of Section 17

2632.65 feet from the southeast corner of Section 17

2.64 feet north and 2.43 feet west of the lost position

Did not excavate area of corner because the County Highway Department conducted one in 1977 in search of a monument and they did not find any.

Consulted with LaMoine Meyer, Holly Township Clerk, about the 1901 survey by D.L. Bighorn, and he said that the survey information that the Township has is the same as what's on file at the County Recorder's Office.

Analysis of the above information led the DNR Division of Lands and Minerals to conclude that found 3/8 inch diameter rebar marks the location of the corner. A plastic cap stamped "MN DNR LS 17003" was set over the found rebar and ties were taken to it as shown on the sketch of reference ties.